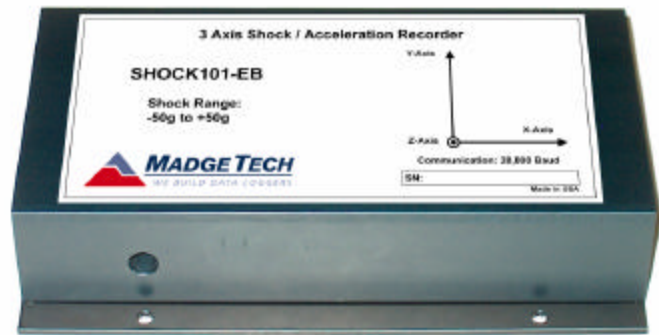


FEATURES

- ❖ High speed download
- ❖ N.I.S.T. traceable
- ❖ Real-time operation
- ❖ Low cost
- ❖ Programmable start time
- ❖ Reusable
- ❖ Compact
- ❖ User-friendly
- ❖ Built-in accelerometers

APPLICATIONS

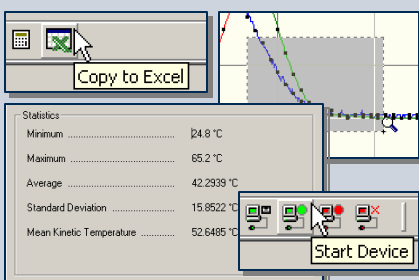
- ❖ Assembly line monitoring
- ❖ Brake testing
- ❖ Fragility testing
- ❖ Laboratory drop testing
- ❖ Aircraft turbulence measurement
- ❖ Machinery monitoring
- ❖ Railcar coupling impacts
- ❖ Shipment monitoring



The SHOCK101-EB is a battery powered, stand alone 3-axis shock recorder which offers an extended battery life of up to 60 days typical. The unit measures and records shock as the peak acceleration levels over the user defined interval. The SHOCK101-EB is specifically designed for documenting dynamic environments such as moving vehicles, trucks, containers, ships, etc. The device is also valuable in characterizing environments such as production and assembly lines of delicate equipment, IC fabrication, communications and computer components. This is an all-in-one compact, portable, easy to use device that will measure and record up to 43,690 measurements per channel. The storage medium is non-volatile solid state memory, providing maximum data security even if the battery becomes discharged. The device can be started and stopped directly from your computer and it's small size allows it to fit almost anywhere. The SHOCK101-EB makes data retrieval quick and easy. Simply plug it into an empty com port and our user-friendly software does the rest.

SOFTWARE

MadgeTech's Data Recorder Software is an easy to use Windows-based software package that allows the user to effortlessly collect, display and analyze data. A variety of powerful tools allow you to examine, export, and print professional looking data with just a click of the mouse.



SHOCK101-EB SPECIFICATIONS

Acceleration Range: ±50 g	Calibration: Digital calibration through software
Acceleration Resolution: 0.1g (12 bit)	Calibration Date: Automatically recorded within device
Calibrated Accuracy: ±1 g	Power: 6 D-cell alkaline batteries included
Sampling Rate: 2 millisecond (> 500 Hz)	User Replaceable Battery: 60 days typical
Reading Interval: 8 readings every second to 1 every hour	Data Format: Date and time stamped g
Memory: 43,690 readings per channel	Time Accuracy: ±1 minute/month (at 20 °C, RS232 port not in use)
Start Time: Software programmable start time and date. Up to 24 hours in advance	Computer Interface: PC serial or RS232C COM (Interface cable required); 38,400 baud
Real Time Recording: May be used with PC to monitor and record instantaneous acceleration in real time	Software: Windows 95/98/ME/NT/2000/XP based software
	Operating Environment: -20 °C to +70 °C, 0 to 90 %RH non-condensing
	Dimensions: 1.875" x 5.5" x 8.75" (48mm x 140mm x 223mm)
	Weight: 5 lb (2.3 kg)

SOFTWARE FEATURES

Multiple Graphs: Simultaneously analyze data from several units or deployments; easily switch to a single data series	Statistics: Calculate averages, min, max, standard deviation, and mean kinetic temperature with the touch of a button
Real-Time Recording: Collect and display data in real-time while continuing to log	Export Data: Export data in a variety of common formats, or switch to Excel with a single click
Graphical Cursor: One click displays readings by time, value, parameter or sample number	Calibration: Fully digital calibration function automatically stores parameters in device
Data Table: Instantly access tabular view for detailed dates, times, values, and annotations	Logger Configuration: Easy set up and launch of data loggers with immediate or delayed start, preferred sample rate, and device ID
Scaling Options: Autoscale function fits data to the screen, or allows user to manually enter their own values	Communications: Automatically sets up communications port, or lets user set configuration
Formatting Options: Change colors, line styles, plotting options, show or hide channels in an instant	Printing: Automatically print graphical or tabular data

*As part of our commitment to continuous product improvement, MadgeTech reserves the right to change product specifications without notice.

ORDERING INFORMATION

Model	Description
SHOCK101-EB	Shock Recorder with Extended Battery Life
IFC101	Software, manual and 9-pin computer interface cable
N.I.S.T. Cert	N.I.S.T. Calibration Certificate

ASK ABOUT OUR OTHER DATA RECORDERS

Temperature	Voltage
Humidity	Current
Pressure	Submersible
pH	Intrinsically Safe
Level	RF Transmitters
Shock/Vibration	Multi-parameter
Pulse/Event	



201 Route 103 West - PO Box 50 · Warner, NH 03278
Phone: (603) 456-2011 · Fax: (603) 456-2012
info@madgetech.com · www.madgetech.com